

# HINKLEY POINT C LOCAL IMPACTS

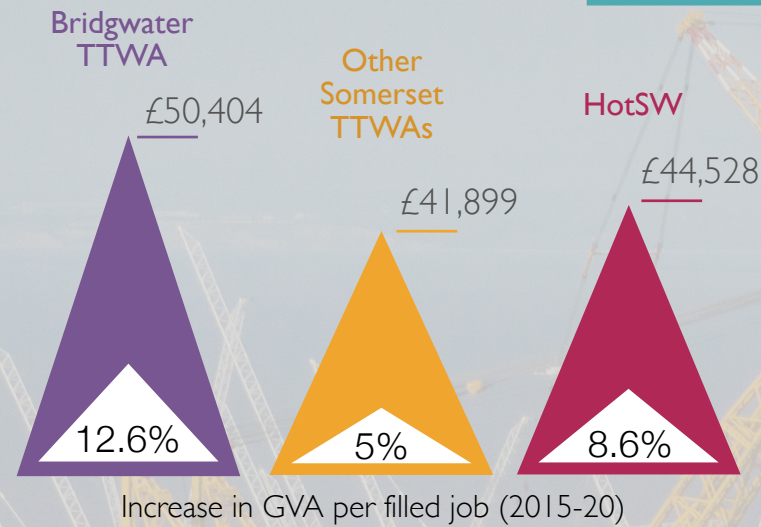
Hinkley Point C is the first new nuclear power station to be built in the UK in over 20 years and represents one of Europe's largest infrastructure projects. The power station will provide low-carbon electricity for around 6 million homes whilst the construction is forecast to create 25,000 employment opportunities and train over 1,000 apprentices. Over £5 billion has already been spent directly with South West businesses and direct investment into skills and training facilities is hoped to deliver a lasting legacy.

This dashboard considers the wider impacts of the project across Somerset and the wider Heart of the South West area. The impact of Hinkley Point C is shown most strongly in local datasets. Demonstrating impact on a wider geographical basis - despite the significant size of the project - is complicated by a myriad of external factors, not least the economic impact of the pandemic over the past few years.



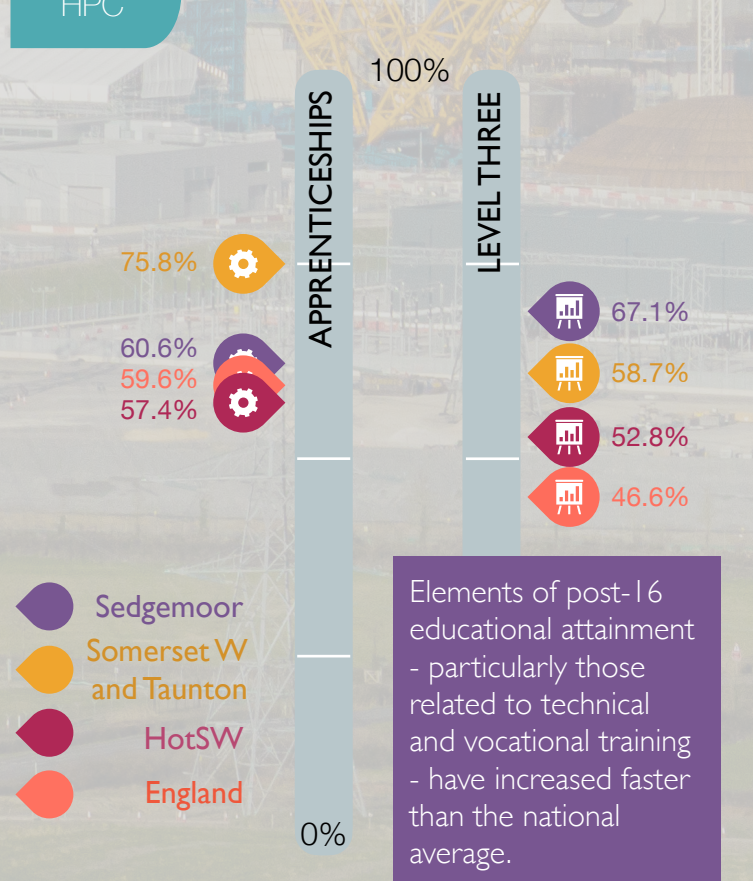
## ECONOMIC PROSPERITY LABOUR PRODUCTIVITY TRAVEL TO WORK AREAS (TTWA)

Every £1 spent by HPC generates £2.50 of value in local region



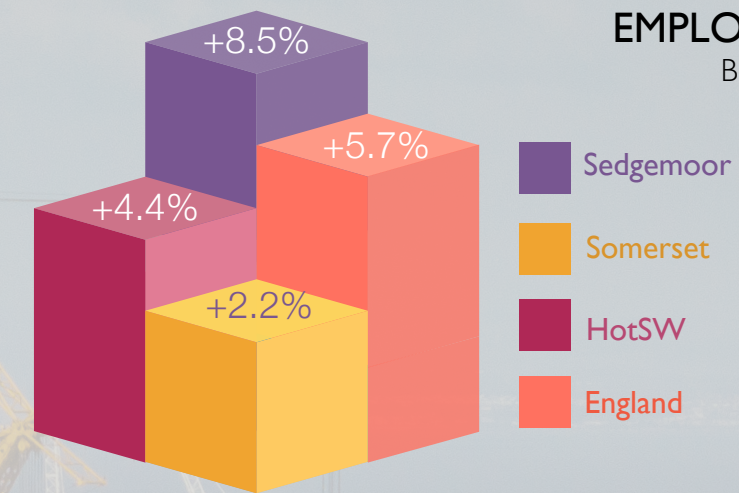
Bridgwater has the highest labour productivity in HotSW area and it has increased faster than elsewhere.

## 1,131 apprentices trained at HPC QUALIFICATIONS CHANGE BETWEEN 2011 AND 2021



Elements of post-16 educational attainment - particularly those related to technical and vocational training - have increased faster than the national average.

## EMPLOYMENT INCREASE BETWEEN 2015 AND 2021

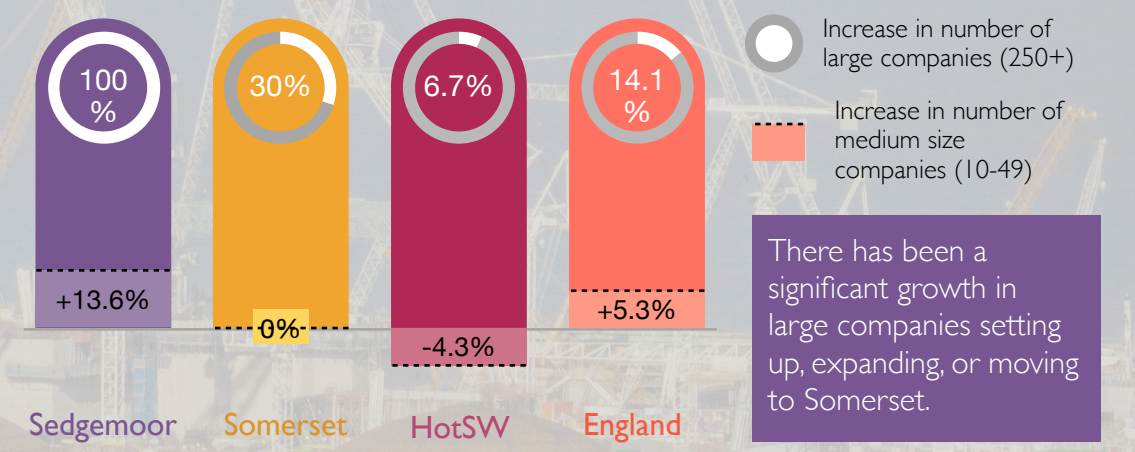


At a more localised scale there has been a +28% increase in employment in the areas which include the site.

19,250 jobs created at HPC

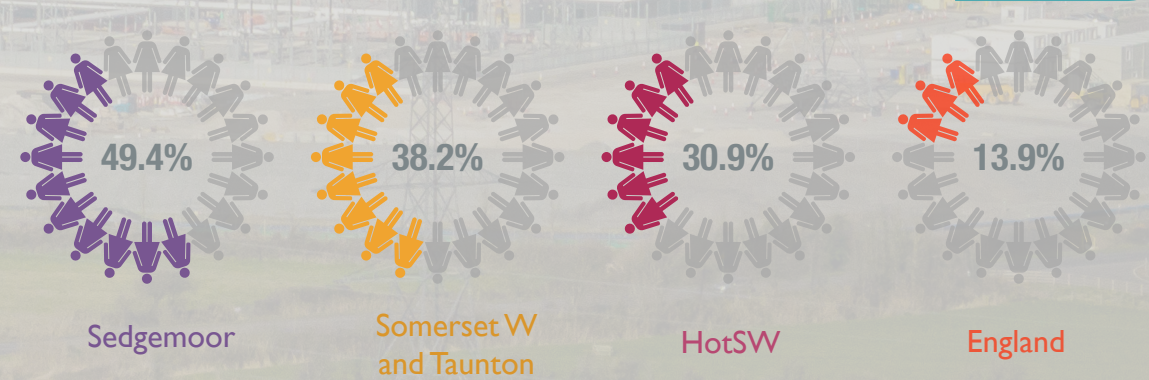
£5.3 billion spent with South West companies

## GROWTH IN NUMBER OF COMPANIES BETWEEN 2015 AND 2022



There has been a significant growth in large companies setting up, expanding, or moving to Somerset.

## GROWTH IN POPULATION AGED 25-39 BETWEEN 2011 AND 2021



36% of the HPC workforce live locally

Significantly higher than average growth in population for those aged 25-39 in Sedgemoor and West Somerset and Taunton, probably reflective of greater employment opportunities.



# HINKLEY POINT C – data notes



LOCAL  
IMPACTS

This dashboard provides a snapshot of relevant data that is available at local, county, and LEP areas. Work on Hinkley Point C began in 2016 and as most data sets are lagged, the dashboard is only reflecting the impacts from the first four or five years of a 10 year capital project.

## LABOUR PRODUCTIVITY

Labour productivity is a measurement of how much output is produced by labour input (usually either per hour or per job). It is used as an important measure for economic prosperity.

Data provided via ONS at Travel to Work Areas.

## EMPLOYMENT GROWTH

Data for Somerset West and Taunton is not shown on the dashboard because the data indicates that negligible employment increase has occurred. However, at a more localised level employment growth has been strong

Data provided via ONS (Business Register and Employment Survey) at LA and LEP level

## NEW COMPANIES

It is important to recognise that the growth in larger companies may represent the growth of existing companies, or the presence of new companies who may have moved to the area. However, we cannot tell this from the available data.

Data provided via ONS (UK Business Counts) at LA and LEP level

## QUALIFICATIONS

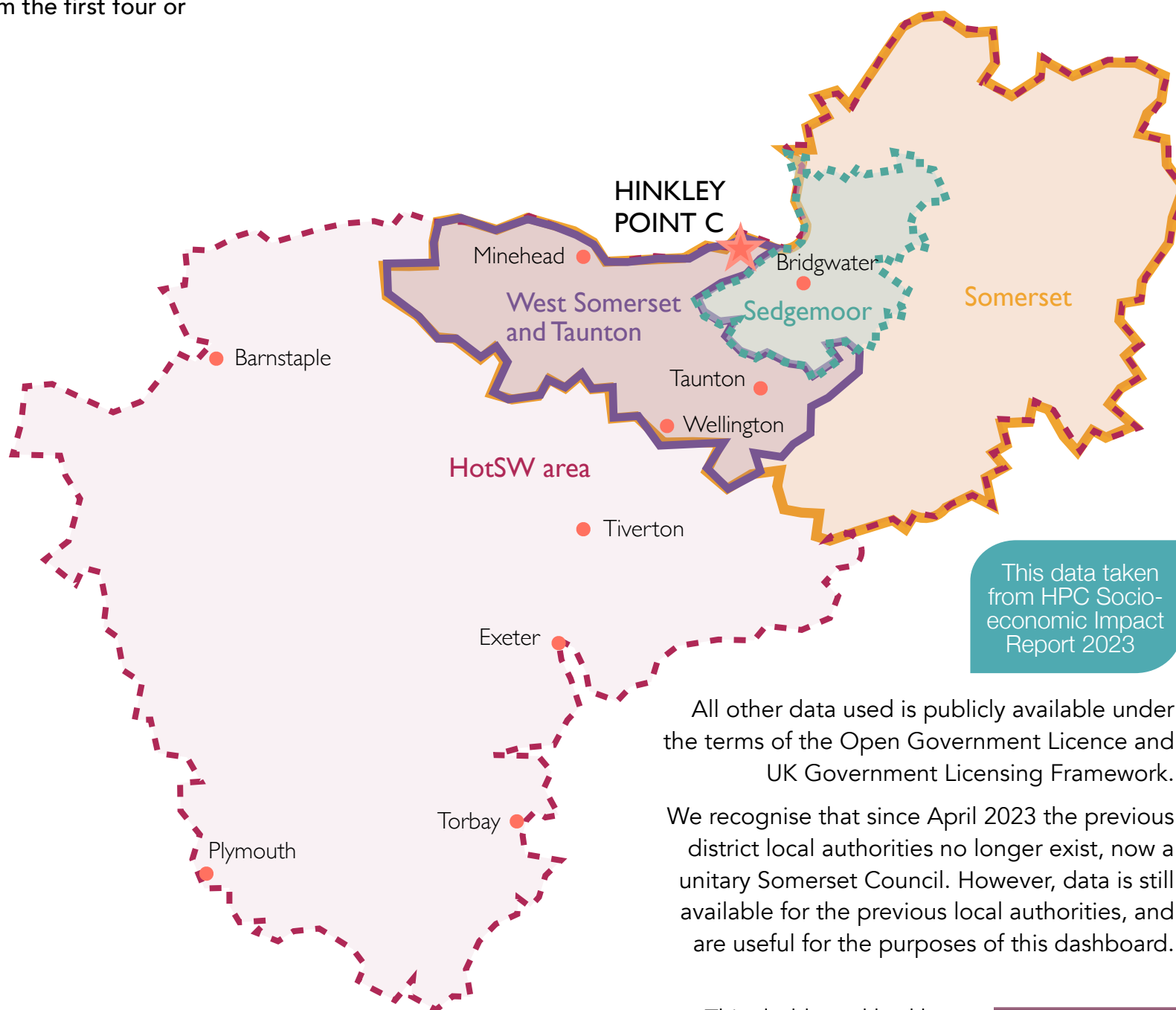
Census (2011 and 2021) data provided via ONS at LA and national level

## POPULATION GROWTH

Data provided via ONS (Population Estimates) at LA and national level

These links act as confirmation of the data source.

In all cases, we represent the most up-to-date data, even if sometimes that is lagged.



All other data used is publicly available under the terms of the Open Government Licence and UK Government Licensing Framework.

We recognise that since April 2023 the previous district local authorities no longer exist, now a unitary Somerset Council. However, data is still available for the previous local authorities, and are useful for the purposes of this dashboard.

This dashboard had been produced by Ash Futures on behalf of HotSW LEP

