

SUMMARY OF THE
EVIDENCE
UNDERPINNING THE
HEART OF THE
SOUTH WEST
LOCAL INDUSTRIAL
STRATEGY

Introduction

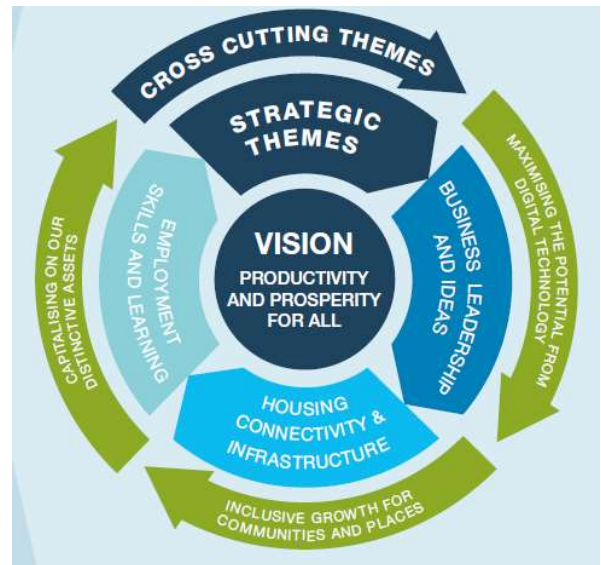
The Heart of the South West's Productivity Strategy has a simple ambition to double the size of the economy over 20 years. The vision is for all parts of the area to become more prosperous and for people to have a better quality of life with higher living standards.

Improving productivity is key to achieving that goal and the Strategy was developed on the basis of a robust underpinning evidence base to guide our collective actions for accelerating growth. The evidence base draws on a variety of sources including technical papers, the work of our Leadership Groups, feedback from extensive partner consultation to help us understand what matters to local stakeholders and commissioned studies.

Each of these sources of data and information was important in shaping the Productivity Strategy, and more latterly the Local Industrial Strategy ensuring that it builds on the area's distinctive strengths and responds to our opportunities and challenges.

This index provides a chronological overview of the evidence base and is divided into two sections: the first section covers the documents that have been prepared by the LEP and its partners; and the second section covers the external and commissioned reports that have fed into the Strategy. In each case the index sets out the nature of the supporting document including:

- The title;
- Unique reference;
- The type of document;
- Who it was prepared by;
- Date of publication; and,
- A brief summary of the contents.



INDEX OF EVIDENCE BASE DOCUMENTS

Title	Reference	Type of Document	Prepared by	Date	Brief Summary
Documents Prepared by the LEP and Partners					
Driving Productivity in the Heart of the South West	001	Green Paper (consultation document)	University of Exeter	Jan 2017	The report draws on a variety of published statistics to set out the productivity challenges facing the Heart of the SW, compared to other areas as well as the assets within the area. It posed a series of questions and invited feedback from partners through a consultation process
Driving Productivity in the Heart of the South West Consultation Engagement	002	Consultation response	Torbay Council	Jan – Feb 2017	The document summarises responses received by 44 organisations to an online consultation on the green paper which ran between January and February 2017
Creativity and Productivity in the Heart of the South West	003	Technical Paper	University of Exeter	Jan - Mar 2017	The paper examines the relationship between creativity and productivity. It specifically focuses on: the growth of the creative industries and the spill-over benefits for the local economy; the correlation between engagement with arts and culture and health and wellbeing (and its correlation with productivity); opportunities for creative clusters; the role the creative industries in driving regeneration and growth; the importance of arts education to the skills agenda; and, cross-sectoral links
Productivity Growth in the Heart of the South West	004	Technical Paper	University of Exeter	Jan -Mar 2017	The paper provides an understanding of the trends and drivers of economic growth compared to other LEPS; and, seeks to determine the extent to which economic growth can be attributed to rising employment levels or gains in productivity

Title	Reference	Type of Document	Prepared by	Date	Brief Summary
Driving Productivity in the Heart of the South West; Lessons from Other Regions	005	Technical Paper	University of Exeter	Jan -Mar 2017	The paper looks at a number of approaches adopted to boost productivity and growth in other UK and European regions through a series of case studies
Skills and Productivity in the Heart of the South West	006	Technical Paper	University of Exeter	Jan -Mar 2017	The paper examines the relationship between skills and productivity and explores the performance of the Heart of the South West area across a wide range of skills-related measures including: the skills pipeline; skills of the existing workforce (including employer propensity to train and the and the quality of leadership and management); attracting and retaining talent; the types of jobs that are likely to be in demand in future; the extent and nature of unemployment in the area; and, demographic issues
Productivity-Led Growth: Evidence on Leadership & Knowledge (Business) Theme	007	Supporting document, prepared to inform the Productivity Strategy	Business Leadership Group	Summer 2017	The document feeds into the Productivity Strategy and provides local intelligence and ideas from the LEP's Business Leadership Group around driving productivity in businesses
Productivity-Led Growth: Evidence from People Theme	008	Supporting document, prepared to inform the Productivity Strategy	People Leadership Group	Summer 2017	The document feeds into the Productivity Strategy and provides an analysis of the Heart of the South West's strengths, weaknesses, opportunities and threats in relation to people based factors
Productivity-Led Growth: Evidence from the Place Theme	009	Supporting document, prepared to inform the Productivity Strategy	Place Leadership Group	Summer 2017	The document feeds into the Productivity Strategy and considers the nature and geography of the following issues: digital connectivity and resilience; business infrastructure; natural capital; and, energy transmission and distribution

Title	Reference	Type of Document	Prepared by	Date	Brief Summary
Economic Modelling	010	Technical report	Strategic Economics	Sept 2017	The report sets out a framework to support the setting of realistic macro targets and the monitoring of future micro interventions for productivity growth
Heart of the South West Productivity Strategy Consultation Results	011	Consultation response	Torbay Council	Dec 2017	The document summarises findings from the South West Draft Productivity Strategy consultation period which ran between 10 October and 14 December 2017. It includes feedback from 58 individual responses to an online survey in addition to 34 written representations and feedback gathered from two 'LEP conversations' (business events)
External and Commissioned Reports					
The South Coast Marine Cluster: Marine Inward Investment Evidence Study	012	Commissioned report	Wavehill Ltd	June 2017	The report set out to map, quantify, and contextualise the contribution of the South Coast Marine Cluster (SCMC) to both the Marine and Maritime sectors (MMS) UK-wide, and also to the overall UK economy
Microelectronics and Photonics in the Heart of the South West Region	013	Commissioned report	Harlin Ltd	Aug 2017	The report was commissioned to identify what makes the area's electronics and photonics sector unique; how it is distinguished from other regions in the UK (and Europe) and where it is similar
Going for Growth: Scale-Ups Research	014	Commissioned report (on behalf of 4 SW LEPs)	Ash Futures and SW Growth Service	Oct 2017	The report details the findings of research commissioned to understand the main barriers facing high-growth potential businesses in the region, and to gain insight into what support would be most beneficial to help them achieve their growth aspirations

Title	Reference	Type of Document	Prepared by	Date	Brief Summary
The South West Rural Productivity Commission – Key Findings and Recommendations	015	Independent inquiry	Cornwall and the Isles of Scilly, Dorset, Heart of the South West and Swindon & Wiltshire LEPs	Oct 2017	The inquiry was set up by four LEPs in the South West to gather evidence from stakeholders and to explore the issues around rural productivity and growth. Evidence was gathered from written submissions and at a specific evidence session in each county
The South West Rural Productivity Commission – Evidence Report	016	Summary of evidence	Cornwall and the Isles of Scilly, Dorset, Heart of the South West and Swindon & Wiltshire LEPs	Oct 2017	The report provides a more detailed account of the commission's research, highlighting key items of evidence that support the commission's recommendations
Heart of the SW Inclusive Growth Framework	017	Commissioned report	Ash Futures	Nov 2017	The report helps to define what is meant by inclusive growth within the context of the Productivity Strategy and establishes a framework to capture performance over time
How Firms across HotSW are Preparing for Brexit	018	Commissioned report	SQW	May 2018	The report examines how businesses across the HotSW LEP geography are responding to the process of BREXIT, drawing on telephone consultations with 29 businesses
Nuclear Sector Capability of the South West of England	019	Commissioned report	Frazer Nash	May 2018	The report was developed for Nuclear SW to understand what actions are necessary to maximise the economic value of nuclear to the area. It also focuses on the supply chain to aid an understanding of the opportunities and support mechanisms that are in place to help companies win work in the nuclear industry
Europe's Aerospace Powerhouse	020	Promotional literature	Invest Bristol & Bath Heart of the SWP LEP	2015	Summarises the key south west aerospace proposition

			Dorset LEP		
The Importance of Aerospace Research, High-Value Design and Manufacturing to the Somerset Economy	021	Commissioned report	Somerset County Council and South Somerset District Council	March 2017	Deep dive analysis of the aerospace and high value design and manufacturing opportunity within Somerset
South West England and South East Wales Science and Innovation Audit	022	Commissioned Report	Consortium of GW4 Alliance, University of the West of England, Plymouth University, key businesses and Local Enterprise Partnerships across SW England and SE Wales	Nov 2016	In 2016 a consortium of partners responded to Government's invitation to participate in the first wave of the Department for Business, Energy and Industrial Strategy Science and Innovation Audits. The Audit found that the region can lead the UK and compete with the world in advanced engineering and digital innovation. The summary report is included in this evidence base and the full report can be found at http://gw4.ac.uk/sww-sia/