



Annual Report

2018





“ A lot has happened in the Heart of the South West in the last twelve months, and the Local Enterprise Partnership has been instrumental in achieving the improving infrastructure, productive partnerships and business confidence in the area.

The Heart of the South West – covering Devon, Plymouth, Somerset and Torbay – is well known as a fabulous place to live and work. It is now at the forefront of working with Government on the unprecedented opportunities to increase prosperity by raising productivity across genuinely world-class economic assets in partnership with our Local Authorities, other public sector organisations, the community and voluntary sector, but led by the private sector.

From Aerospace in Somerset, to Marine in the south coast cluster, Big Data in Exeter, Photonics in Torbay, Transforming Cities in Plymouth, our natural capital in the National Parks, coasts and Areas of Outstanding Natural Beauty, we have key strengths in key sectors that align closely with the Government’s Industrial Strategy and Grand Challenges.

Our coherence as a LEP and as an area has been strengthened this year through the joint work of developing a Heart of the South West Productivity Strategy and the Government review of LEPs – Strengthening Local Enterprise Partnerships – published in the summer. These have led to our selection as one of the six areas in the second wave of the Industrial Strategies which means that alongside the Mayoral Combined Authorities, we are working directly with Government on our Local Industrial Strategy.

Through the publication of our Productivity Strategy – Stepping Up to the Challenge – we have set ourselves a hugely ambitious goal – to double the size of the economy by 2038 and in doing so provide opportunities for all. I am excited by this challenge and the LEP will be at the forefront of making it happen. With diminished public sector resources, it is time for the private sector to work with our partners in securing such a clear and ambitious goal.

Over the past 12 months we have had so many successes: Securing the Nuclear Sector Deal; HotSW’s designation as a pilot area for a Digital Skills Partnership, Careers Learning and the Flexible Learning Fund; reaching the final round of bidding for an Institute of Technology; progress on the South West Energy Hub; developments of sector deal proposals for Marine and Defence; designation by DIT as a High Potential Area for Photonics; and the West Somerset Opportunity Area, which addresses social mobility; and Transforming Cities for Plymouth.

As well as our strategic successes, when it comes to delivery on the ground, we’re on budget and on time in our circa £760m capital programme; of the 67 funded projects, 24 are already completed, 36 are underway and a further 7 are in the pipeline.

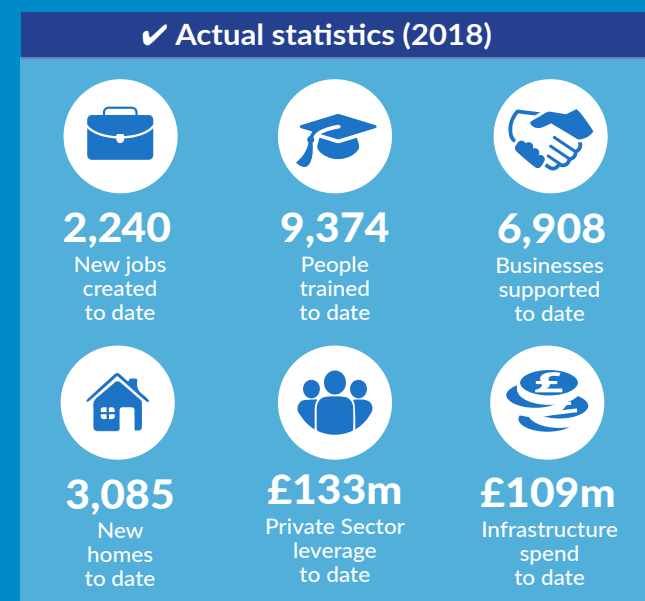
There’s been significant growth in our Foreign Direct Investment figures, with 21 new investment projects creating 1360 jobs and safeguarding 91, showing real business confidence in the area.

The employment rate in our area has increased over the last four years, with 48,000 more people in work, an increase of nearly 7% compared with the UK average increase of 5.6%.

Connectivity is an important factor of success for the economy, and in recent years, our investment from the Growth Deal has improved our road infrastructure at key strategic locations across the area, and superfast broadband coverage has increased by over 20% in the last four years to 94% coverage.

Our achievements are down to the strong partnerships we’ve created through public and private sector working; with our business-led board and a strong Local Authority-led Heart of the South West Joint Committee.

As I look back over the successes of 2017/18, I look forward to working with these partners and more as we gain momentum and embark on a post-Brexit economy with the LEP at the Heart of the South West.



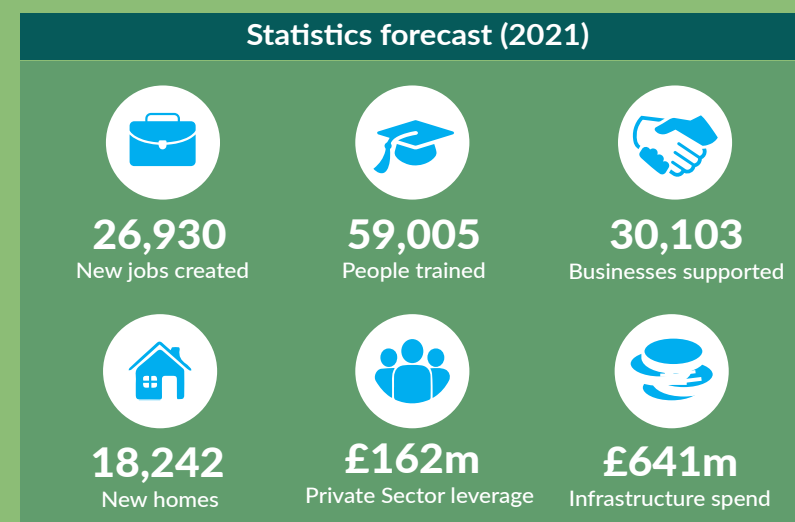
“ Thank you for such a warm welcome throughout the whole area since the beginning of June, it’s been a delight. I’m excited to be in an area that is ‘up for growth’ and increasing the prosperity of its businesses and its communities; but recognises that our greatest asset is our natural capital: our coast, our farms, our National Parks and Areas of Outstanding Natural Beauty and the vitality of our villages, market towns and urban centres.

Productivity can sometimes feel very abstract but fundamentally it’s about people – increasing wage levels so that the economic contribution of every resident is greater. So, at the core of our work is our theme – Living Better – and to increase wages our businesses have to be more profitable.

Through the publication of the Productivity Strategy earlier this year we have set ourselves a very clear long-term objective – by 2038 to double the size of the economy, and in doing so provide opportunities for all. My job as Chief Executive is to work with partners on a clear route map to deliver this objective, and with the LEP Board, to put in place the best possible LEP to implement it.

I am convinced this will mean we have to work more efficiently and effectively and almost certainly differently. I’m convinced that to achieve this we will have to deliver a digital transformation across the area probably by 2025 rather than the public service obligation of 2033. I’m convinced that to do so we will have to maximise the contribution of genuinely world-class assets; I’m convinced that we will need to secure a greater level of the public purse particularly to support our infrastructure, but to do so we have to produce the best propositions – not simply expect investment – and I’m convinced that no one can do it alone. We need to be outward-looking and work collaboratively with our neighbours.

We’ve set a shared ambition and will have to deliver it together. I’m looking forward to it.



Priorities for 2018/19

- ✓ Great South West Partnership backing in Westminster
- ✓ Progressing Transforming Cities and Strength in Places
- ✓ Harnessing EU Fisheries underspend
- ✓ Progressing our designated Nuclear Sector Deal
- ✓ Securing sector deals for Rural, Marine & Defence
- ✓ Delivering HotSW Productivity Strategy through transformational and bedrock opportunities
- ✓ Progressing Local Industrial Strategy
- ✓ Improving Strategic Connectivity in road, rail and broadband through:
- ✓ Confirmation of Sub National Transport Body/(ies)
- ✓ Peninsula Rail priorities e.g. Dawlish line
- ✓ Funding for A303 improvements
- ✓ Superfast Broadband and 5G trials
- ✓ Work with National Infrastructure Commission on an A38/M5 corridor study

Heart of the South West in numbers

With an economy of £35billion a year and a population approaching 1.8m, the Heart of the South West is the size of a major UK city. Employment is amongst the highest in Europe and the challenge now is to raise productivity levels to increase prosperity for all.

The Local Authorities, National Parks and LEP have formed a Heart of the SW partnership, united in developing a Productivity Strategy and a series of opportunities within that which build on the unique assets.

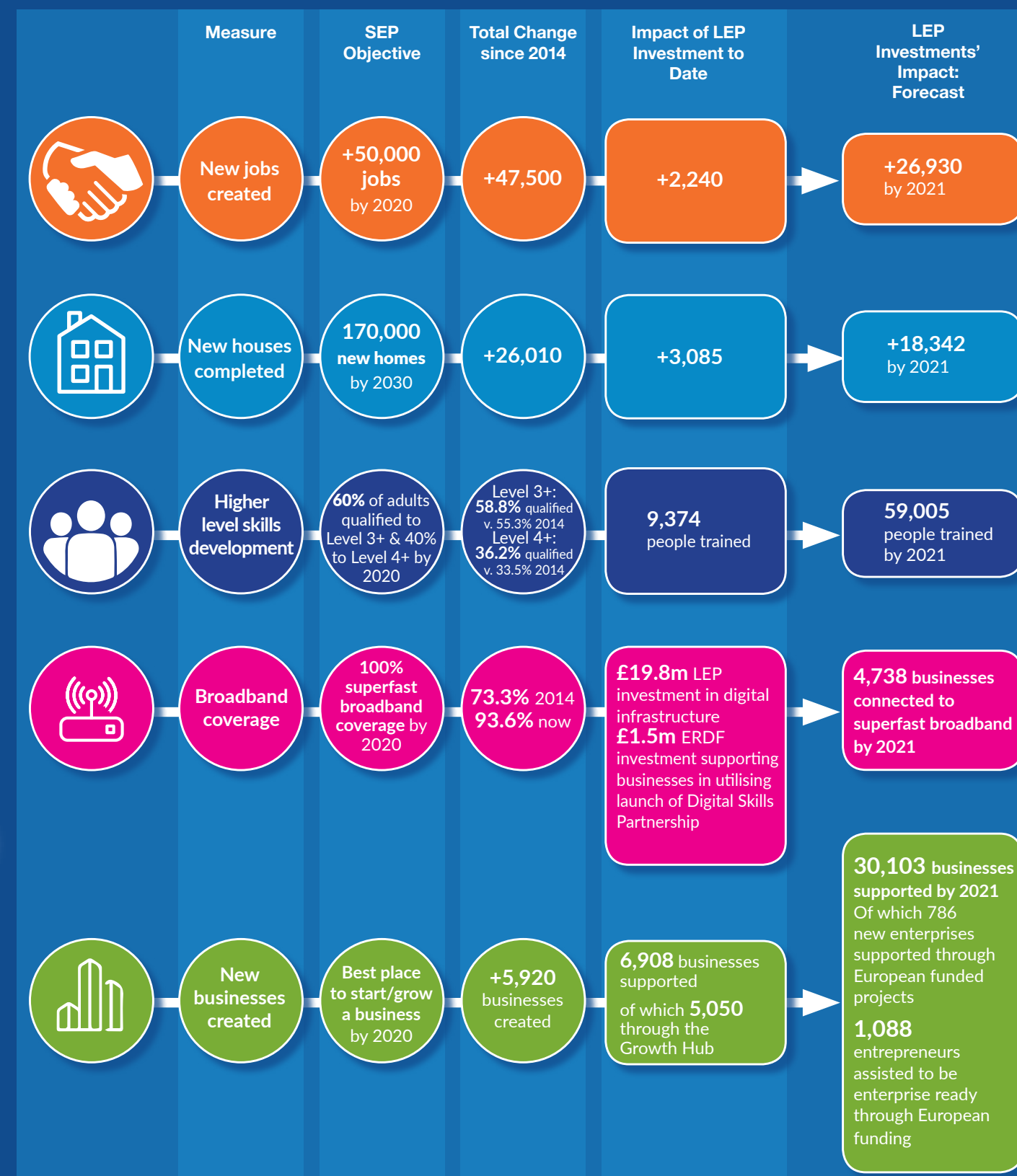
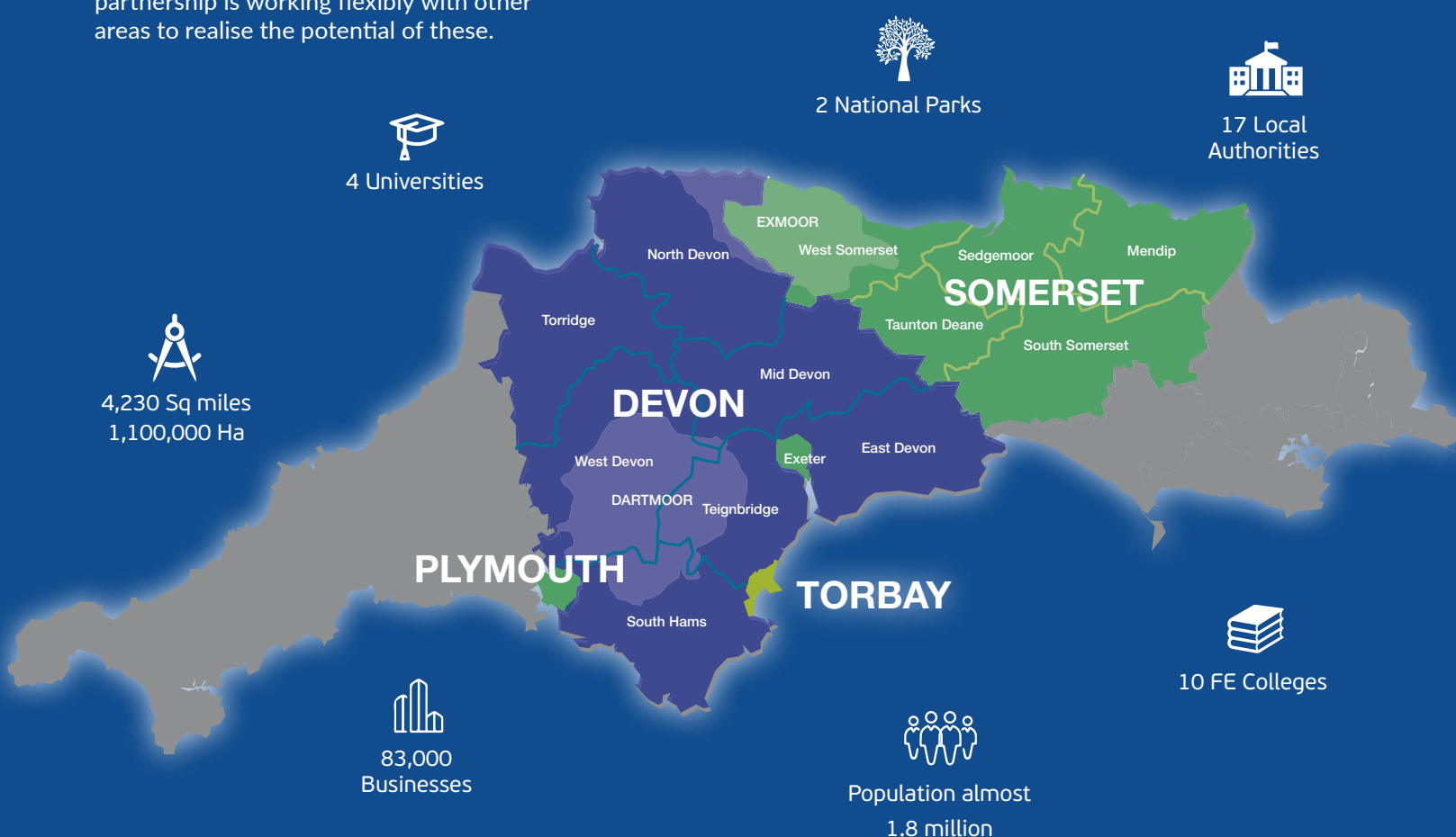
The opportunities cover broad economic geographies and are not constrained by administrative boundaries; the partnership is working flexibly with other areas to realise the potential of these.

Employment & Earnings

Source: ONS

	Employment rate (Jun 2014)	Employment rate (Jun 2018)	Total Employment 2017*	Gross Weekly Full-Time Earnings (Workplace) 2018
Devon	75.4%	79.2%	354,420	£498.3
Plymouth	75.2%	77.8%	247,670	£495.5
Somerset	71.7%	74.8%	117,810	£530.3
Torbay	69.3%	75.7%	50,000	£444.1
HotSW	72.9%	76.9%	770,400	£498.3

*Latest figures available



Heart of the South West LEP Investment Programme

The LEP manages a portfolio of 67 capital and revenue projects, with an investment fund of over three-quarters of a billion pounds.

We've been one of the most successful LEPs in the country for succeeding in our Growth Deal bids with Government, having achieved the highest allocation of all the LEPs in one of the three funding rounds. This programme of delivery is now well underway, with 24 projects already finished and operational, and the rest on target for completion by 2021. These schemes and initiatives range from large infrastructure projects such as road, rail and broadband to new skills training facilities, science parks and flood prevention schemes.



67 projects
24 complete
36 underway
7 planned

Fund	Government Award	Match Funding	Total	Progress	Expected outputs
Growth Deal	£239.1m	£351.1m	£590.2m	24 projects complete 36 projects in delivery 7 projects in the pipeline	67 projects completed 26,930 new jobs 18,242 new homes
Growing Places	£22.6m	£48.4m	£71.0m	2,240 new jobs 3,085 homes built 9,374 people trained	59,005 people trained 30,103 businesses supported
Rural Growth Network Pilot	£2.9m	£15.1m	£18m	6,908 businesses supported	
ESIF	£45m	£35.2m	£80.2m		
TOTAL	£309.6m	£449.8m	£759.4m		



Case Studies

Heart of the South West LEP Investment Programme - 67 projects: 24 complete; 36 underway, 7 planned



Enterprise Zones

Enterprise Zones are a powerful tool in developing the economy, enabling the local area to retain more business rate income and offering benefits to businesses such as discounted rates and simplified planning.

The Heart of the South West offers strategically sited Enterprise Zones, which focus on some of the area's strengths in key sectors: Nuclear and Low Carbon Energy, Marine, Environmental Futures, Advanced Manufacturing/Engineering and Food and Drink.



National College for Nuclear

This National College for Nuclear completed on site this year. Partly funded by £5.15m from the Growth Deal, it's a flagship Nuclear South West project that is helping to deliver the UK's Nuclear Sector Deal with Government. The LEP, EDF Energy and its supply chain identified specific training required to support the infrastructure of Hinkley Point C, and this new facility, along with a sister project in Cumbria, is providing a legacy for high-level future training and wider skills development.

Exeter Science Park

A success story coming from multiple investments from the LEP, the private sector, local authorities, the EU and the former RDA; demonstrating effective partnership working. A LEP Growing Places loan of £4.5m and £5m from the Growth Deal has funded site infrastructure and part-funded the new grow-on buildings which are nearing completion.



EPIC

The Electronics and Photonics Innovation Centre (EPIC) in Paignton will be a hub for the area's hi-tech cluster, and centre of excellence in supporting technical innovation. It provides facilities for collaboration between businesses and research institutions and will support new tech start-ups and spin out companies. £3m Growth Deal funding is allocated to build EPIC, which started on site this year and will open in spring 2019. It will work very closely with the nearby Growth Deal supported South Devon College Hi-Tech and Digital Skills Centre.



Derriford Transport Scheme

The Derriford Transport Scheme, partly funded with £10.6m from the Growth Deal, is nearing completion this autumn, and is unlocking sustainable growth in Plymouth by reducing current congestion and minimising the impact of additional trips on the highway network that will be generated from new business and housing developments in the area. Improved walking and cycling facilities and greater public transport priority will encourage more sustainable journeys to be made.



Somerset flooding

£13.1m Growth Deal funding contribution to 20 year Flood Action Plan, which was drawn up following the floods of the winter of 2013/14, with the urgent requirement to protect homes, businesses, land and infrastructure from the increasing risk of flooding.

The work is being delivered by the Somerset Rivers Authority, with key flood-prevention projects including dredging, pumping, land management, improvements to river channels increased reservoir storage and a tidal barrier at the River Parrett.

South Devon College Hi-Tech and Digital Centre

This innovative new centre will provide skills for hi-tech employers in areas such as electronics, lasers, fibre, satellite and communications, aerospace, marine, medical and data analysis and Big Data; as well as creative industries including gaming, app design, digital design, film and digital media, smart clothing and textiles.

The new centre opens to students in September 2019; and is partly funded with £8.13m from the Growth Deal. The centre will collaborate with the neighbouring EPIC, also partly funded by the Growth Deal.



Tiverton East Urban Extension

£1.5m of Growth Deal funding is going towards the new access onto the A361 North Devon Link Road and to enable housing and employment space developments east of Tiverton.

The North Devon Link Road is of strategic importance, providing connection between Northern Devon, Torridge and North Cornwall and the rest of the country.



Case Studies

Heart of the South West LEP Investment Programme - 67 projects: 24 complete; 36 underway, 7 planned



Heart of the South West Growth Hub

Getting the right advice and support is an important factor for many businesses looking to invest in an area and the Heart of the South West Growth Hub provides an added incentive for investment from new start-ups, those looking to relocate here and companies already established in the area that are looking to grow.

Now in its third year, the Heart of the South West Growth Hub has dealt with 5,084 businesses, that's including 936 being referred to specialist services and 327 having received intensive support from the Growth Hub's business advisers.

The Growth Hub plays a key role in assisting businesses to navigate the complex business support landscape. Testament to its success is the number of businesses coming back into the Growth Hub service after receiving support to find out what else may be on offer to them.



"The advice I have taken has provided me with a new mind-set to know where and how to drive the business further forward."

A. Parker Rhino Play Ltd

Hinkley Point Training Agency

£6.51m of Growth Deal funding was made available to Further Education providers to competitively bid for, in order for them to deliver the new skills training packages demanded due to Hinkley Point C. Successful projects in delivery in association with the Hinkley Point Training Agency are at Exeter; Bicton; Bridgwater and Taunton; Petroc; South Devon and Yeovil Colleges.

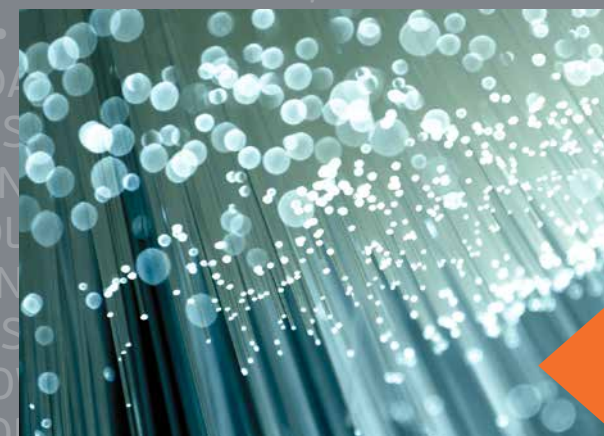


Connecting Devon and Somerset (CDS)

A programme of capital investment to extend the coverage of Superfast Broadband – i.e. 30Mbps and above.

CDS is extending broadband in areas across Devon and Somerset that are under-served by the commercial market. It will improve business competitiveness, productivity and innovation as well as safeguarding employment in areas which would otherwise be at an unfair disadvantage.

£6m in Growth Deal funding and a Growing Places loan of £4.2m are matched by £10.2m from Broadband Delivery UK, connecting 4,738 businesses by 2020.



Torbay Western Corridor

£8.5m Growth Deal funding is improving the access to Torbay from the Western side, unlocking land for the development of new homes and businesses and improving pedestrian and cycle routes. The scheme involves six key elements that widen the roads and improve capacity and traffic flow in this key area for growth.



Oceansgate

Oceansgate is the first exclusively marine Enterprise Zone in the country, and another example of effective partnership working and multiple funding success. The former naval dockyard at South Yard in Plymouth has been transformed into a world-class hub for marine industries, with opportunities for research, innovation and production in a collaborative environment at a deep-waterfront site, with the help of £5m Growing Places Funding and £1.5m from the Growth Deal.



Yeovil Innovation Centre

The Unlocking Growth Fund – with £5m from the Growth Deal – helps develop projects that provide employment and workspace sites to foster business growth. Several projects are currently in the pipeline with business cases being examined, and confirmed funding agreements are in place for enterprise centres at Devonport, South Molton Pathfields and Wells; with operational facilities already in place at Yeovil Innovation Centre and Highbridge Enterprise Centre.



Working Partnerships



Great South West

With our partners in Dorset and Cornwall and the Isles of Scilly, the Great South West partnership is a collaboration to promote our joint interests and raise productivity across the region. Its geography can be flexible for different partnerships and sectors as opportunities emerge. The south west is poised for a significant step change in productivity by delivering the Government's Industrial Strategy.

The region is home to world-class universities, highly skilled workers and hundreds of thousands of growing businesses creating an economy of international scale. Over the last two years, the Great South West partnership has been at the forefront of bringing together LEPs, businesses, universities and other stakeholders to build the narrative of momentum nationally and internationally.



Digital Skills Partnership

A Heart of the South West Digital Skills Partnership was established this year by the Department for Digital, Culture, Media and Sport as one of only two pilot initiatives in the UK. It brings together businesses, charities, and public-sector organisations to tackle local digital skills challenges to build thriving and inclusive local economies. The HotSW area has much to gain and to contribute through the new partnership; there are businesses here that are leading the field as exemplars of digital knowledge, and others with potential for growth by improving digital skills.

Innovate UK

Three south west LEPs including HotSW, Dorset and Cornwall and Isles of Scilly have signed an agreement this year with Innovate UK, the first of its kind, which is part of the Government's national funding agency that invests in science and research to help boost innovation. Innovate UK drives productivity and growth by supporting businesses to realise their potential by embracing new technologies and developing innovative ideas to increase their commercial success.



Productivity Strategy

The LEP Board and HotSW Joint Committee have agreed a Productivity Strategy, aiming to double the economy by 2038. Raising productivity is critical to improving living standards and creating wealth in the future, and the Strategy sets out where we will focus our efforts to achieve this. The Strategy has evolved from the HotSW Strategic Economic Plan, and a delivery plan is being developed through the partners, along with the Prospectus #livingbetter which outlines the area's key sector propositions that offer the most opportunities for generating growth. HotSW was designated this year as one of the areas in the second wave of the Government's Local Industrial Strategy Areas, which gives us a higher ranking in our negotiations for funding and strategic backing. Our coherence as an area with one voice has been recognised by Westminster, and this will make the delivery of the Productivity Strategy more effective.



Careers Hub

HotSW has been selected as one of 20 pilot Careers Hubs to help transform careers education for young people and prepare them for the world of work. The Heart of the South West Careers Hub is made up of 40 local schools and colleges working together with universities, training providers, employers and career professionals to improve careers education, helping young people to follow higher value careers and improving the productivity of the area.



Working Partnerships

Nuclear South West

Nuclear South West is a partnership between the nuclear industry network and the stakeholder alliance in the LEP areas of the Heart of the South West, West of England and GFirst; the academic skills sector and business support agencies.

Its role is to capitalise on the £50bn worth of commercial opportunities over the next 20 years in new build, commissioning and defence.

The south west has unparalleled strength and potential in the global nuclear industry; and Nuclear South West is working with Government to deliver the National Industrial Strategy as part of its Nuclear Sector Deal that was designated in last year's Budget.



Inward Investment

The HotSW area performed well this year in attracting both new foreign direct investment (FDI) as well as supporting expansion of existing companies. Figures show significant growth building upon last year's successful results.

In the year 2017/18, the HotSW area secured 21 successful FDI projects, creating 1360 new jobs and safeguarding 91. This compares with 16 projects having generated 688 jobs in the previous year, indicating improved performance in the numbers of businesses investing (up 30%) and the volume of jobs created (up 97%). In addition, the HotSW LEP secured 5 'multi-region' FDI projects, i.e. those that land in multiple UK locations.

Rural Productivity Commission Report

Four South West LEPs: Cornwall and the Isles of Scilly, Dorset, Heart of the South West and Swindon and Wiltshire, commissioned an independent enquiry to identify opportunities to stimulate rural productivity and growth.

The commission found huge potential for economic growth if key opportunities are seized and challenges addressed. The nationally acclaimed report shows examples of tangible projects that will deliver benefits throughout the community; and its findings have helped shape the new Prospectus #livingbetter that outlines the major opportunities for growth and productivity in the Heart of the South West.



European Funding



European Structural and Investment Fund

The 2014-2020 European Structural and Investment Funds (ESIF) Growth Programme for England brings together three funds: European Regional Development Fund (ERDF), European Social Fund (ESF) and European Agricultural Fund for Rural Development (EAFRD).

The funds are managed by their respective Government department with the Heart of the SW LEP and other local partners providing strategic advice to ensure investments match local priorities. More information is available at the ESIF Growth Programme for England website: www.gov.uk/guidance/england-2014-to-2020-european-structural-and-investment-funds

Fund	Notional Allocation	Contracted	In the business process	Total Contracted & under application	% of Notional Allocation	Live Calls	Balance to be applied for (future calls)
ERDF	£62,097,723	£21,596,245	£28,074,716	£49,670,961	80%	£5,250,000	£7,176,762
ESF	£44,318,182	£20,741,906	£875,000	£21,616,906	49%	£10,130,000	£12,571,276
EAFRD	£15,540,333	£2,761,653	£26,884,002	£29,645,655	191%	-	-
ESIF TOTAL	£121,956,238	£45,099,804	£55,833,718	£100,933,522	83%	£15,380,000	£19,748,038

European Funding

Contracted European Regional Development Fund (ERDF) projects in the Heart of the South West

The European Regional Development Fund is managed and administered by the Ministry for Housing, Communities and Local Government (MHCLG) with key priorities of innovation, business support, ICT and the low carbon economy. For more information visit:
www.gov.uk/guidance/england-2014-to-2020-european-structural-and-investment-funds



Project	Total ERDF Awarded for HotSW	Link to Further Information (where available)
Innovate2Succeed	£0.5 million	www.businesswest.co.uk/about/partners-programmes/innovate2succeed
Plymouth Materials Characterisation Project	£1.0 million	www.plymouth.ac.uk/your-university/about-us/university-structure/faculties/science-engineering/electron-microscopy-centre
Innovation in Healthy Ageing	£0.7 million	www.devon.gov.uk
Electronics and Photonics Innovation Centre (EPIC)	£1.4 million	www.torbaydevelopmentagency.co.uk/projects/regeneration/epic
Environmental Futures and Big Data Impact Lab	£3.8 million	impactlab.org.uk/
Graduates into Business	£0.5 million	
Superfast Broadband Extension Programme	£4.6 million	www.connectingdevonandsomerset.co.uk
Local Manufacturing Advisory Programme	£0.8 million	www.swmas.co.uk/business-support/local-manufacturing-advisory-programme-0
Export for Growth	£1.3 million	www.export4growth.co.uk/about-export
Start-Up and Grow	£0.7 million	www.heartofswgrowthhub.co.uk
Growth Support Programme	£0.9 million	www.heartofswgrowthhub.co.uk
Enhance Social Enterprise Programme (Enhance SE)	£1.0 million	www.heartofswgrowthhub.co.uk
Wells Technology Enterprise Centre	£0.6 million	www.regensw.co.uk/zebcat
Wiveliscombe Enterprise Centre	£0.5 million	
Enterprise Hub @ SEIC	£0.9 million	
Hi-Tech and Digital Centre	£0.9 million	www.southdevon.ac.uk/news/2018/06/22/south-devon-college-leading-the-way-with-developing-hi-tech-and-digital-skills
Zero Energy Building Catalyst (ZEBCAT)	£1.5 million	www.regensw.co.uk/zebcat
TOTAL	£21.6 MILLION	

Contracted European Social Fund (ESF) Projects in the Heart of the South West

The European Social Fund is managed and administered by the Department for Work and Pensions with key priorities of employment and skills. For more information visit:
www.gov.uk/guidance/england-2014-to-2020-european-structural-and-investment-funds



Project	Link to Further Information (where available)
Education and Skills Funding Agency (ESFA) Opt-in Activity - £9.7 million	
Skills for young people service	www.cswgroup.co.uk/what-we-do/partnerships/esfa-contracts/
Start-up support	
The Heart of the South West Apprenticeship Service	www.heartofswgrowthhub.co.uk
Skills Support for the Workforce	www.heartofswgrowthhub.co.uk
Big Lottery Opt-in Activity - £7.8 million ESF	
#Focus5	www.cswfocus5.co.uk/
Empowering Enterprise	www.petroc.ac.uk/college-information/projects/empowering-enterprise
Positive People Devon	www.positive-people.org.uk/
Positive People Somerset	www.positive-people.org.uk/
Other ESF activity - £3.2 million	
Hidden Talent in Devon and Somerset - ESF	www.plymouth.ac.uk/research/esif-funded-projects/hidden-talent
Strategic Employer Engagement in Devon and Somerset	www.regensw.co.uk/zebcat
TOTAL ESF £20.7 MILLION	

European Funding

Contracted European Agricultural Fund for Rural Development (EAFRD) projects in the Heart of the South West

The Rural Development Programme for England Growth Programme is managed and administered by the Rural Payments Agency on behalf of the Department for Environment, Food and Rural Affairs. EAFRD can be used to support growth, jobs and productivity in all rural areas of the Heart of the South West, with a focus on grants for food processing, tourism and micro and small businesses. Further information is available at: www.gov.uk/government/publications/rdpe-growth-programme



Project	Total EAFRD Awarded
11 business development projects	£1.2m
3 food processing projects	£0.7m
8 tourism infrastructure projects	£0.8m
TOTAL OF 22 PROJECTS CONTRACTED	TOTAL OF £2.7M

ESIF Projects

Case Studies in the Heart of the South West

Electronics and Photonics Innovation Centre (EPIC)

£1,375,000 ERDF has been awarded to Torbay Council to bring forward the Electronics and Photonics Innovation Centre (EPIC) in Torbay. EPIC will be a 3,834m² centre of excellence for innovation in micro-electronic and photonics. The Centre will provide businesses from across the Heart of the South West LEP area of Devon, Plymouth, Somerset and Torbay with access to specialist equipment and facilities including laboratories and cleanrooms. As well as sector support services EPIC will support R&D, design and prototyping, testing and validation along with commercialisation of new technologies.

Innovation in Healthy Ageing

£655,448 ERDF has been awarded to a consortium, led by Devon County Council, to deliver the Innovation in Healthy Ageing Programme. The programme has been designed to use key challenges and opportunities around the impact of ageing populations, changing lifestyle choices and the rise in chronic conditions as a catalyst for innovation and growth. Eligible SMEs based in Devon, Plymouth and Torbay will have the opportunity to work collaboratively and to apply for funding to develop ideas in the following sectors: pharmaceutical; medical technology; medical bio-technology; and healthcare services.

Innovate2Succeed

innovate2succeed is an intensive coaching programme designed to stimulate innovation in business. The fully-funded programme supports high growth businesses wanting to introduce new technologies or processes to their business, or those wishing to launch new products and services to their customers and markets, through up to seven days of bespoke support.

Plymouth Materials Characterisation Project

We are looking for 40 companies who want to examine their components, materials or products at the nano-scale with a view to developing better products, more efficient processes, overall quality improvement or failure analysis. Thanks to funding from the European Regional Development Fund, the Plymouth Electron Microscopy Centre has purchased a new instrument; the FIB-SEM (focussed ion beam, scanning electron microscope) which Devon businesses can use for free and also access our technical and academic expertise.

Superfast Broadband Extension Programme

£4,625,000 ERDF has been awarded to the Connecting Devon and Somerset Partnership for the ERDF Superfast Broadband Extension Programme. The Programme will support provision of Next Generation Access (NGA) broadband infrastructure to eligible SME premises in areas of the Heart of the South West where the private sector has deemed it uneconomic to invest.

Board and Accounts

The LEP Board is made up of high calibre leaders from the private, public and education sectors who invest their time and expertise on a voluntary basis to increase productivity and prosperity in the Heart of the South West.



David Bird
Regional Director,
Santander Commercial
and Corporate Banking



Stuart Brocklehurst
Chief Executive,
Applegate



Diane Dimond
Principal and CEO of
Petroc College



Paul Diviani
Councillor, East Devon
District Council



Tudor Evans
Leader, Plymouth
City Council



Rufus Gilbert
Councillor, Devon
County Council



David Hall
Deputy Leader,
Somerset County Council



Steve Hindley
Chair,
Midas Group Ltd



Helen Lacey
Managing Director, Red
Berry Recruitment Ltd



Fiona McMillan
Non-Executive Director,
EDF Energy New Build
Gen Co Ltd



Judith Petts
Vice-Chancellor,
University of Plymouth



David Ralph
Heart of the South West LEP
Chief Executive



Barbara Shaw
Chief Executive,
Westward Housing



Harvey Siggs
Leader,
Mendip District Council



Sir Steve Smith
Vice-Chancellor and
Chief Executive,
University of Exeter



Mel Squires
South West Regional
Director, NFU



Richard Stevens
Managing Director,
Plymouth Citybus



David Thomas
Councillor,
Torbay Council



Karl Tucker
Managing Director,
Yeo Valley



Martha Wilkinson
Chief Executive, Devon
Community Foundation

	Bal. b/fwd @ 1st Apr 2017 £'m	Funds In £'m	Sub total £'m	Funds Out £'m	Bal. c/fwd @ 31st Mar 2018 £'m	Committed in 2018/19 £'m
Core Funding	2.05	3.10	5.14	2.23	2.91	0.19
Local Growth Fund	48.42	36.13	84.55	30.38	54.17	49.64
Growing Places Fund	12.96	0.92	13.88	3.10	10.78	5.35
Minor funds	0.19	0.00	0.19	0.01	0.18	0.01
TOTAL	63.62	40.15	103.76	35.72	68.04	55.19



www.heartofswlep.co.uk



@HeartofSWLEP



HM Government

